

State of Wyoming Corner Record

(In compliance with the CORNER PERPETUATION AND FILING ACT, Wyoming Statutes, 1977, Section 38-11-101, et. seq., and the Rules and Regulations of the Board of Registration for Professional Engineers and Professional Land Surveyors)

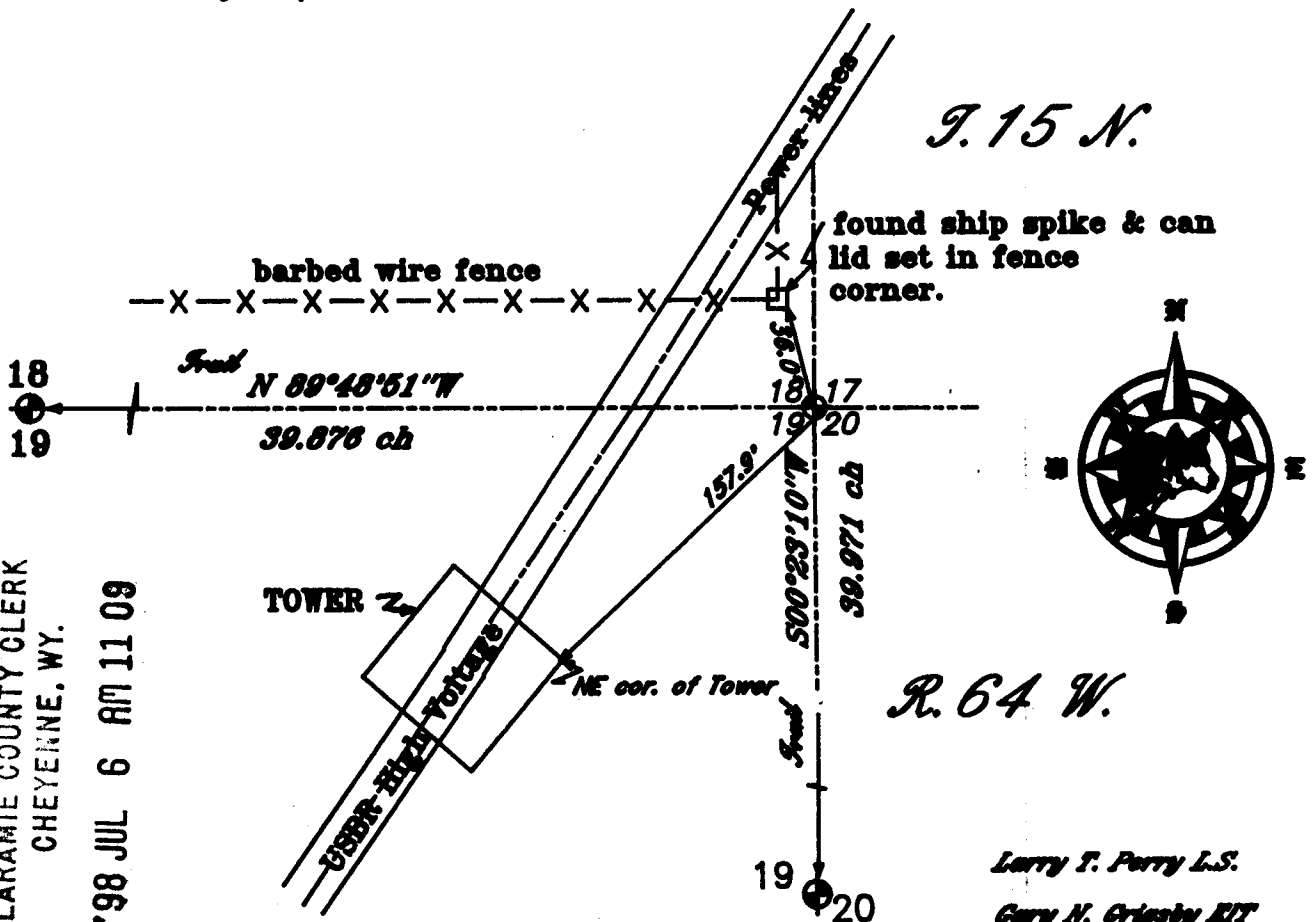
The Reverse side of this form may be used if more space is needed.

The record of the original survey and the citation of the source of historical information (if the corner is lost or obliterated) The description of the corner monumentation evidence as found and/or monument and accessories established to perpetuate the location of this corner. A sketch of the relative location of the monument, accessories, and reference points with course and distance to the adjacent corner(s) (if determined in this survey). The method and rationale for reestablishment of the lost or obliterated corner.

GLO: North between Section 19 & 20. 40.00 chains set limestone 18"X9"X6" for quarter section corner. 55.00 chains Emigrant Road bears E & W. 75.00 chains Enter Lodge Pole Creek Valley bears E & W. 80.00 chains set limestone 20"X10"X8" for corner to Sections 17, 18, 19 & 20.

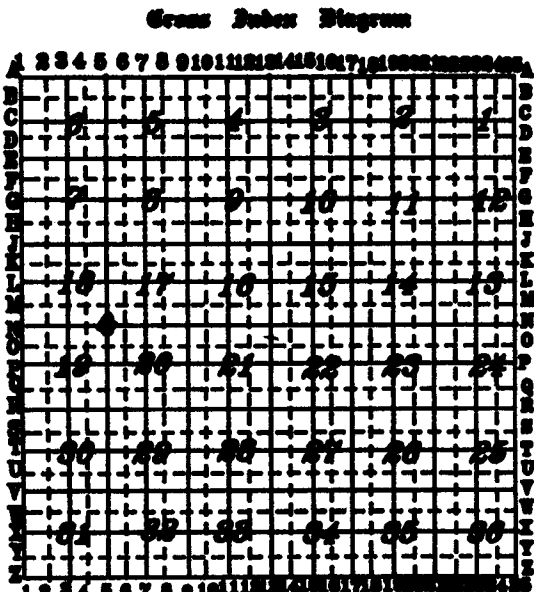
Found Claystone 16"X12"X6" with hash marks on S & E side, well set but worn and almost illegible. Turned Stone upside down & buried same along side of a new Monument being a 5/8"X44" rebar with a 3" Aluminum Cap, set.

229046
 LARAMIE COUNTY CLERK
 CHEYENNE, WY.
 '98 JUL 6 AM 11 09



Date of Field Work: 28 May A.D. 1998

Office Reference: DELAN



Terrestrial Surveying & Mapping Co.
 1187 Terry Ranch Road Cheyenne, Wyoming 82007
 Phone: (307) 634-6300

This corner record was prepared by me or under my direct supervision.

Seal and Signature



Corner Name: Section cor. Section: 18, 17, 19, 20 T. 15 N. R. 64 W. 6th P.M. Cross Index No. N-6